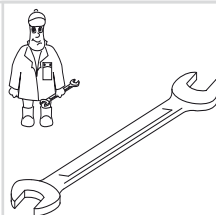




Gebr. Becker GmbH
Hölker Feld 29-31
D-42279 Wuppertal

Wartung
Maintenance
Entretien
Manutenzione
Mantenimiento



	Pos.	Menge ²⁾ Quantity Quantité Quantità Cantidad	Bestell-Nr. Ident No. No. Identification No. Identificazione No. de pedido	Bezeichnung Description Designation Designazione Descripción
U 3.6 S	...	1	549000 23900	Dichtungssatz, Complete set of seals, Jeu de joints, Kit di guarnizioni, Junta completa
	7	SATZ (KIT)	900561 00003	Schieber, Rotor Vane, Palette, Empujador
	35	1	965406 00000	Luftentölelement, Oil separating element, Element separation huile, Cartuccia separatore olio, Elemento de desaceitar de aire

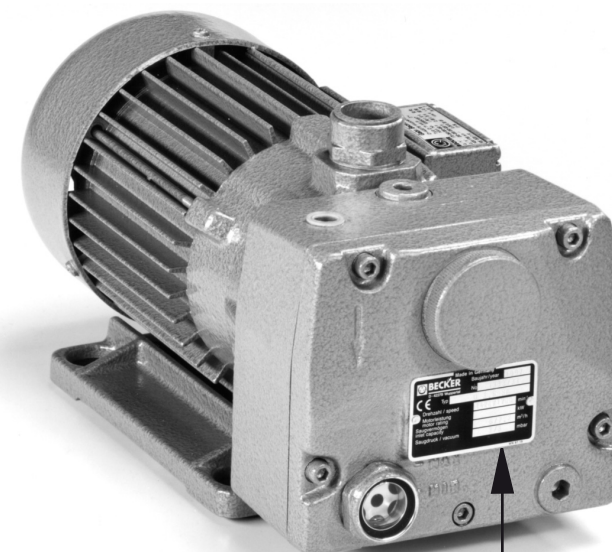
²⁾ erforderliche Bestellmenge / necessary order quantity / quantité nécessaire / quantità di ordinazione necessari / cantidad necesario



Ersatzteilliste
Spare parts list
Liste de pièces de rechange
Listino pezzi di ricambio
Lista de piezas de recambio
Lista de peças sobresselentes
Reserveonderdelenlijst
Reservedeliste
Reservdelista

Reservedeliste
Varaosaluettelo
Wykaz części zamiennych
Seznam náhradních dílů
Tartalékalkatrész lista
Κατάλογος ανταλλακτικών
Перечень запасных частей
备用零件目录
スペアパーツリスト

U 3.6 S



28000023900 01/2009

?

o

SERVICE

BECKER
D-42279 Wuppertal
www.becker-international.com

year

No.

type ← Option

frequency Hz

speed min⁻¹

power required kW

inlet capacity m³/h

max. vacuum mbar

Made in Germany


D Service:


Tel: +49 (0)202 697-171

Fax: +49 (0)202 64 44 74

E-Mail: info@becker-international.com

www.becker-international.com

Index	Pos.	Ident No.	Description 
U 3.6 S	...	549000 23900	GASKET SET ¹⁾
	4	020000 23900	ROTOR
	6	911002 00000	STAR-TOLERANCE-RING
	7	900561 00003	ROTOR VANE IN PLASTIC (KIT)
	9	000100 23900	PUMP BODY
	10	945363 00000	SOCKET HEAD SCREW
	13	948765 00000	BLIND RIVET
	14	001600 23900	OIL SUMP
	15	945324 00000	SOCKET HEAD SCREW
	16	948021 00000	SEALING RING
	17	951202 00000	LOCKING SCREW
	18	947906 00000	SEALING RING
	28	867800 99559	FLOAT
	31	003300 10700	NOZZLE
	35	965406 00000	OIL SEPARATING ELEMENT (1x) ²⁾
	36	913163 00000	O-RING
	41	015100 23900	FOOT
	42	951703 00000	SPRING DISC
	43	945319 00000	SOCKET HEAD SCREW
	46	951918 00000	RUBBER BUSHING
52	948062 00000	SEALING RING	
54	737500 99686	NON RETURN VALVE	
81	002500 23900	OIL SEPARATOR COVER	
82	007000 23900	GASKET	
83	945320 00000	SOCKET HEAD SCREW	
85	948021 00000	SEALING RING	
87	952009 00000	LOCATING PEG	
88	907309 00000	OIL SIGHT GLASS	
91	040800 23900	FILTER COVER	
92	948066 00000	SEALING RING	
95	008001 23900	SIEVE	
96	008000 23900	SIEVE	
97	005000 23900	METAL FILTER	
141	021500 23900	HANDLE	
143	945320 00000	SOCKET HEAD SCREW	
144	948505 00000	SPRING WASHER	

Index	Pos.	Ident No.	Description 
U 3.6 S	...	549000 23900	GASKET SET ¹⁾
	4	020000 23900	ROTOR
	6	911002 00000	STAR-TOLERANCE-RING
	7	900561 00003	ROTOR VANE IN PLASTIC (KIT)
	9	000100 23900	PUMP BODY
	10	945363 00000	SOCKET HEAD SCREW
	13	948765 00000	BLIND RIVET
	14	001600 23900	OIL SUMP
	15	945324 00000	SOCKET HEAD SCREW
	16	948021 00000	SEALING RING
	17	951202 00000	LOCKING SCREW
	18	947906 00000	SEALING RING
	28	867800 99559	FLOAT
	31	003300 10700	NOZZLE
	35	965406 00000	OIL SEPARATING ELEMENT (1x) ²⁾
	36	913163 00000	O-RING
	41	015100 23900	FOOT
	42	951703 00000	SPRING DISC
	43	945319 00000	SOCKET HEAD SCREW
	46	951918 00000	RUBBER BUSHING
52	948062 00000	SEALING RING	
54	737500 99686	NON RETURN VALVE	
81	002500 23900	OIL SEPARATOR COVER	
82	007000 23900	GASKET	
83	945320 00000	SOCKET HEAD SCREW	
85	948021 00000	SEALING RING	
87	952009 00000	LOCATING PEG	
88	907309 00000	OIL SIGHT GLASS	
91	040800 23900	FILTER COVER	
92	948066 00000	SEALING RING	
95	008001 23900	SIEVE	
96	008000 23900	SIEVE	
97	005000 23900	METAL FILTER	
141	021500 23900	HANDLE	
143	945320 00000	SOCKET HEAD SCREW	
144	948505 00000	SPRING WASHER	


¹⁾ Set of seals - 549000 23900 - Pos.: 16, 18, 36, 52, 82, 85, 92


²⁾ necessary order quantity / maintenance


OPTIONAL

U 3.6 S -09 Special design - with gas ballast valve

-46 Special design - with suction filter

Items different from standard appliance see appendix (back of drawing) 

Index	Pos.	No. Identification	Designation 
U 3.6 S	...	549000 23900	JEU DE JOINTS ¹⁾
	4	020000 23900	PISTON
	6	911002 00000	BAGUE STAR
	7	900561 00003	PALETTE ON PLASTIQUE (KIT)
	9	000100 23900	CORP DE POMPE
	10	945363 00000	VIS HEXAGONALE INTERNE
	13	948765 00000	RIVET AVEUGLIE
	14	001600 23900	RESERVOIR D'HUILE
	15	945324 00000	VIS HEXAGONALE INTERNE
	16	948021 00000	JOINT
	17	951202 00000	BOUCHON
	18	947906 00000	JOINT
	28	867800 99559	PIED CAOUTCHOVE
	31	003300 10700	GICLEUR
	35	965406 00000	ELEMENT SEPARATION HUILE (1x) ²⁾
	36	913163 00000	ANNEAU-O
	41	015100 23900	PIED
	42	951703 00000	DISQUE DE RESSORT
	43	945319 00000	VIS HEXAGONALE INTERNE
	46	951918 00000	PROTECTION EN CAOUTCHOUC
52	948062 00000	JOINT	
54	737500 99686	SOUPAPE ANTI RETOUR	
81	002500 23900	COUVERCLE DU SEPARATEUR D' HUILE	
82	007000 23900	JOINT	
83	945320 00000	VIS HEXAGONALE INTERNE	
85	948021 00000	JOINT	
87	952009 00000	DOVILLE DE ETRAGE	
88	907309 00000	VERRE REGARD	
91	040800 23900	COUVERCLE DU FILTRE	
92	948066 00000	JOINT	
95	008001 23900	FILTRE	
96	008000 23900	FILTRE	
97	005000 23900	FILTRE METALLIQUE	
141	021500 23900	POIGNEE	
143	945320 00000	VIS HEXAGONALE INTERNE	
144	948505 00000	ANNEAU-RESSORT	


Index	Pos.	No. Identification	Designation 
U 3.6 S	...	549000 23900	JEU DE JOINTS ¹⁾
	4	020000 23900	PISTON
	6	911002 00000	BAGUE STAR
	7	900561 00003	PALETTE ON PLASTIQUE (KIT)
	9	000100 23900	CORP DE POMPE
	10	945363 00000	VIS HEXAGONALE INTERNE
	13	948765 00000	RIVET AVEUGLIE
	14	001600 23900	RESERVOIR D'HUILE
	15	945324 00000	VIS HEXAGONALE INTERNE
	16	948021 00000	JOINT
	17	951202 00000	BOUCHON
	18	947906 00000	JOINT
	28	867800 99559	PIED CAOUTCHOVE
	31	003300 10700	GICLEUR
	35	965406 00000	ELEMENT SEPARATION HUILE (1x) ²⁾
	36	913163 00000	ANNEAU-O
	41	015100 23900	PIED
	42	951703 00000	DISQUE DE RESSORT
	43	945319 00000	VIS HEXAGONALE INTERNE
	46	951918 00000	PROTECTION EN CAOUTCHOUC
52	948062 00000	JOINT	
54	737500 99686	SOUPAPE ANTI RETOUR	
81	002500 23900	COUVERCLE DU SEPARATEUR D' HUILE	
82	007000 23900	JOINT	
83	945320 00000	VIS HEXAGONALE INTERNE	
85	948021 00000	JOINT	
87	952009 00000	DOVILLE DE ETRAGE	
88	907309 00000	VERRE REGARD	
91	040800 23900	COUVERCLE DU FILTRE	
92	948066 00000	JOINT	
95	008001 23900	FILTRE	
96	008000 23900	FILTRE	
97	005000 23900	FILTRE METALLIQUE	
141	021500 23900	POIGNEE	
143	945320 00000	VIS HEXAGONALE INTERNE	
144	948505 00000	ANNEAU-RESSORT	

¹⁾ Jeu de joints - 549000 23900 - Pos.: 16, 18, 36, 52, 82, 85, 92
²⁾ quantité nécessaire / entretien

EN OPTION

U 3.6 S -09 Fabrication spéciale - avec soupape l'este d'air

-46 Fabrication spéciale - avec filtre d'aspiration

Articles divergents vis-à-vis de l'appareil standard, voir annexe (dos du dessin / du plan) 

Index	Pos.	No. Identificazione	Designazione 
U 3.6 S	...	549000 23900	KIT GUARNIZIONI ¹⁾
	4	020000 23900	ROTORE
	6	911002 00000	STAR-ANNELLO TOLLERANZA
	7	900561 00003	PALETTE IN PLASTICA (KIT)
	9	000100 23900	CARCASSA
	10	945363 00000	VITE ESAGONALE INTERNA
	13	948765 00000	RIVETTO CIECO
	14	001600 23900	SERBATOIO OLIO
	15	945324 00000	VITE ESAGONALE INTERNA
	16	948021 00000	ANELLO GUARNIZIONE
	17	951202 00000	VITE DI CHIUSURA
	18	947906 00000	ANELLO
	28	867800 99559	GALLEGGIANTE
	31	003300 10700	UGELLO
	35	965406 00000	CARTUCCIA SEPARATORE OLIO (1x) ²⁾
	36	913163 00000	ANELLO-O
	41	015100 23900	PIEDE
	42	951703 00000	DISCO A MOLLA
	43	945319 00000	VITE ESAGONALE INTERNA
	46	951918 00000	PROTEZIONE IN GOMMA
52	948062 00000	ANELLO GUARNIZIONE	
54	737500 99686	VALVOLA NON RITORNO	
81	002500 23900	COPERCHIO SEPARATORE OLIO	
82	007000 23900	GUARNIZIONE	
83	945320 00000	VITE ESAGONALE INTERNA	
85	948021 00000	ANELLO GUARNIZIONE	
87	952009 00000	SPINE DI RISCONTRO	
88	907309 00000	SPIA LIVELLO OLIO	
91	040800 23900	COPERCHIO FILTRO	
92	948066 00000	ANELLO GUARNIZIONE	
95	008001 23900	FILTRO	
96	008000 23900	FILTRO	
97	005000 23900	FILTRO METALLICO	
141	021500 23900	MANETTA	
143	945320 00000	VITE ESAGONALE INTERNA	
144	948505 00000	ANELLO A MOLLA	

Index	Pos.	No. Identificazione	Designazione 
U 3.6 S			

¹⁾ Serie di guarnizione - 549000 23900 - Pos.: 16, 18, 36, 52, 82, 85, 92

²⁾ quantità di ordinazione necessari / manutenzione

OPZIONALE

U 3.6 S -09 Modello speciale - con valvola di zavoratrice

-46 Modello speciale - con filtro d'aspirazione

Vedere allegato (retro del disegno) per le posizioni divergenti dall'apparecchio standard 

Index	Pos.	No. De pedido	Descripción
U 3.6 S	...	549000 23900	JUEGO DE JUNTA, COMPLETO ¹⁾
	4	020000 23900	ÉMBOLO
	6	911002 00000	ANILLO DE TOLERANCIA STAR
	7	900561 00003	EMPUJADOR DE PLÁSTICO (KIT)
	9	000100 23900	CARCASA
	10	945363 00000	TORNILLO HEXAGONAL INTERIOR
	13	948765 00000	REMACHE CIEGO
	14	001600 23900	RECIPIENTE DE ACEITE
	15	945324 00000	TORNILLO HEXAGONAL INTERIOR
	16	948021 00000	ANILLO DE JUNTA
	17	951202 00000	TORNILLO DE CIERRE
	18	947906 00000	ANILLO USIT
	28	867800 99559	FLOTADOR
	31	003300 10700	TOBERA
	35	965406 00000	ELEMENTO DE DESACEITAR DE AIRE (1x) ²⁾
	36	913163 00000	JUNTA TÓRICA
	41	015100 23900	PIE
	42	951703 00000	ARANDELA ELÁSTICA
	43	945319 00000	TORNILLO HEXAGONAL INTERIOR
	46	951918 00000	BOQUILLA DE GOMA
	52	948062 00000	ANILLO DE JUNTA
	54	737500 99686	VÁLVULA ANTIRRETORNO
	81	002500 23900	TAPA DE SEPARADOR DE ACEITE
	82	007000 23900	JUNTA
83	945320 00000	TORNILLO HEXAGONAL INTERIOR	
85	948021 00000	ANILLO DE JUNTA	
87	952009 00000	CASQUILLO TENSOR	
88	907309 00000	CRISTAL MIRILLA DE ACEITE	
91	040800 23900	TAPA DE FILTRO	
92	948066 00000	ANILLO DE JUNTA	
95	008001 23900	CRIBA	
96	008000 23900	CRIBA	
97	005000 23900	CHAPA DE FILTRO	
141	021500 23900	EMPUÑADURA	
143	945320 00000	TORNILLO HEXAGONAL INTERIOR	
144	948505 00000	ARANDELA DE MUELLE	

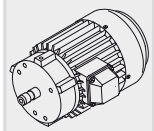
Index	Pos.	No. De pedido	Descripción
U 3.6 S			

¹⁾ Junta completa - 549000 23900 - Pos.: 16, 18, 36, 52, 82, 85, 92
²⁾ cantidad necesario / mantenimiento

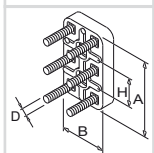
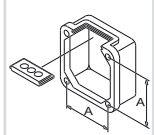
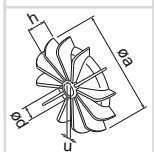
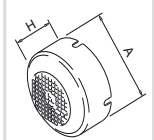
U 3.6 S -09 Versión especial - con valvula de lastre de gas

-46 Versión especial - con filtro de aspiración

Para posiciones que derivan del aparato standard véase apéndice (lado trasero del plano)

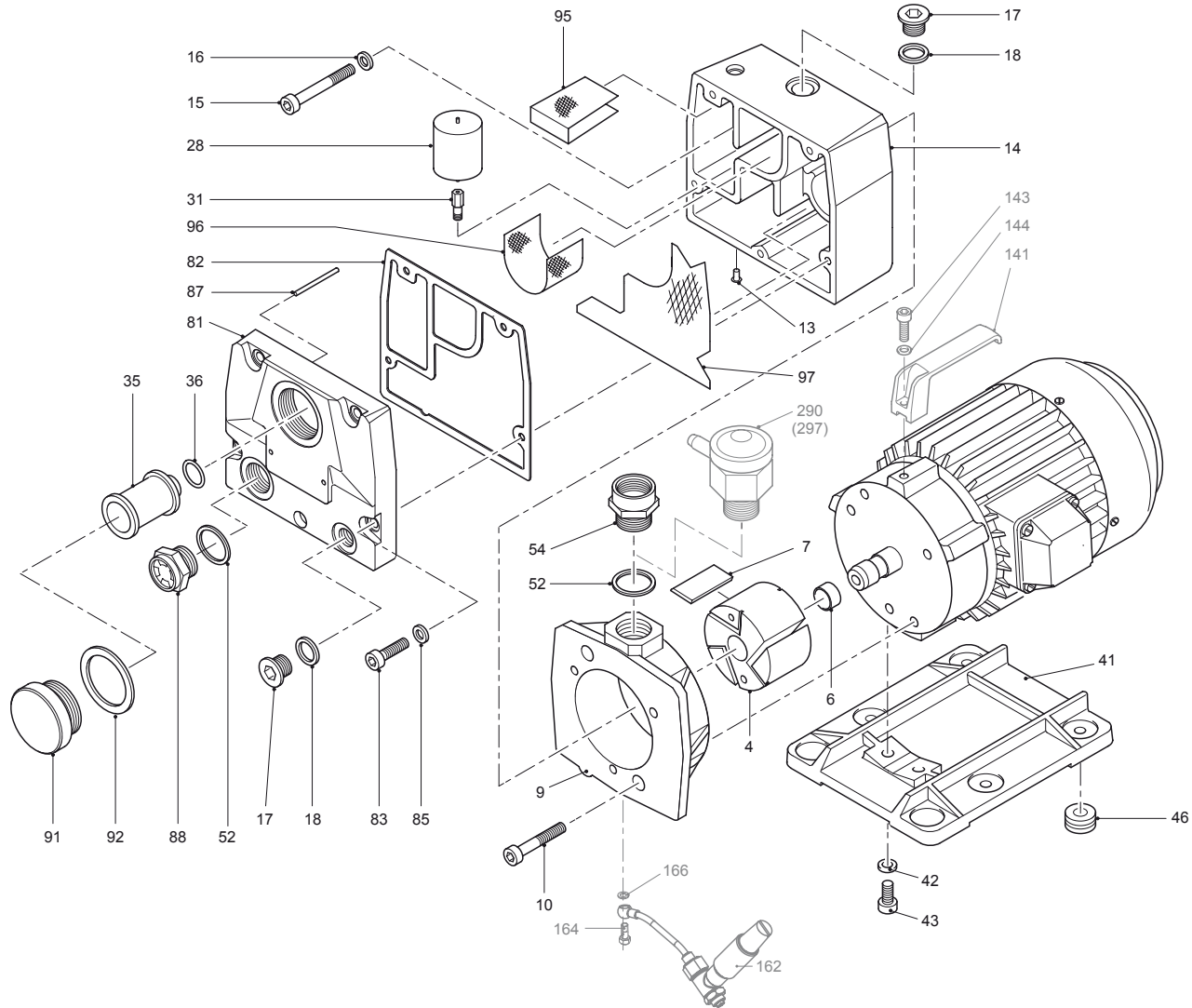
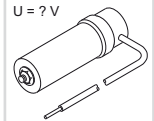


SERVICE ?



1~




C = ? μ F
U = ? V



standard

U 3.6 S

optional
en option
opcionale
opcional

optional en option optionale opcional 	Variante(n) Modifications Variantes	Pos ³⁾	Bestell Nr. / Ident No. / No. Identification / No. Identificazione / No. De pedido		Beschreibung / Description / Designation / Designazione / Desripcion
					
U 3.6 S-XX	U 3.6 S-09	9	000101 23900	000100-23900	GEHÄUSE / PUMP BODY / CORP DE POMPE / CARCASSA / CARCASA GASBALLASTVENTIL / GAS BALLAST VALVE / SOUPEPE L'ESTE D'AIR / VALVOLA DI ZAVORATRICE / VÁLVULA DE LASTRE DE GAS KUGELSTÜCKSCHRAUBE / HOLLOW HOLDING SCREW / VIS CREUSE DE FIXATION / VITE PASSAGIO OLIO / TORNILLO DE ESFÉRICA DICHTUNG / GASKET / JOINT / GUARNIZIONE / JUNTA
		162	768718 99626		
		164	009400 19000		
	166	948002 00000			
	U 3.6 S-46	41	015101 23900	015100-23900	FUSS / FOOT / PIED / PIEDE / PIE ANSAUGFILTER, KOMPL. / SUCTION FILTER / FILTRE D'ASPIRATION / FILTRO D'ASPIRAZIONE / FILTRO DE ASPIRACIÓN FILTERPATRONE, FILTER CARTRIDGE, CARTOUCHE FILTRANTE, CARTUCCIA FILTRO, CARTUCHO DE FILTRO
		290	740004 05000		
297		840403 05000			

³⁾ variantenabhängige Bauteile / variant-dependent components / composants variante-dependantes / componenti variante-dispendenti / componentes variante-dependientes



standard